

Piper PA-18 Super Cub



The PA18 Super Cub was introduced by the Piper Aircraft Company in 1949. It traces its lineage back to the J3 Cub of the 1930's. Although very similar in appearance and design, the PA-18 has many differences. Piper added an electrical system, flaps and a considerable more powerful engine. Changing the position of the fuel tank altered the centre of gravity allowing the pilot to solo operate the aircraft from the front seat. The J3 could only be soloed from the back seat.

With the more powerful engine and upgrades the Super Cub would develop a very dedicated following in the bush-flying community. It's not uncommon to see a Super Cub equipped with amphibious floats. These type of float allows the aircraft to operate from land or water. Equipping the Super Cub with tundra tires allow the ability to takeoff and land just about anywhere other then water. Super Cubs equipped with wheels can typically get airborne within 200 feet and require around 400 feet or less to land.

There is still a large majority of the 10,326 Super Cubs built that are still flying with more than 1,000 registered in Alaska alone. For an aircraft originally conceived in the 1930's to still be so popular today is a testament of the aircraft design.

Piper PA-18 150 Specifications

Length	22' 5"
Wingspan	35' 3"
Power	Lycoming O-320 producing 150 hp
Performance	Maximum Speed 130mph
Numbers built	10,326

Piper PA-18 Super Cub Float Plane



Wooden Semi Scale Model Kit

Easy build sandwich construction

No special tools required

PAINT NOT INCLUDED

1:66 Scale

FOR AGES 10 AND UP
SKILL LEVEL 1
Contains One Model Kit



KIT-6032

Building tips:

All parts will be a tight fit. If you find a part is too tight give it a bit of a sanding with 220 grit sandpaper. **DO NOT FORCE PARTS.** A hobby knife is suggested to cut the pieces from the part tree but most parts will break free easily. We recommend removing the burnt edge left by the laser with 220 grit sandpaper. This makes it easier for painting also it makes for a better appearance, especially if you are going to leave the model in it's natural wood state. Although the model is designed to be assembled without glue, we do suggest glueing your model together. Noting indicated parts that are not to be glued. Any black substance that gets on your hands is non toxic and can be removed with soap and water



Indicates do not glue part or assembly

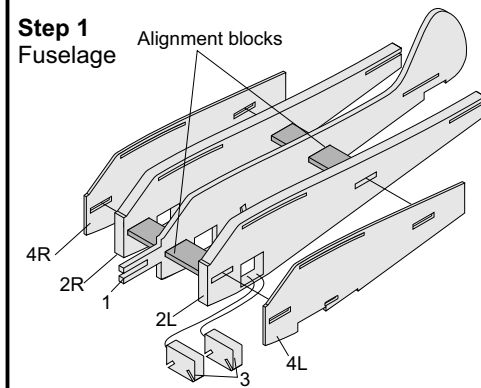


Indicates part is a friction fit in order to hold in place

Recommended Tools:

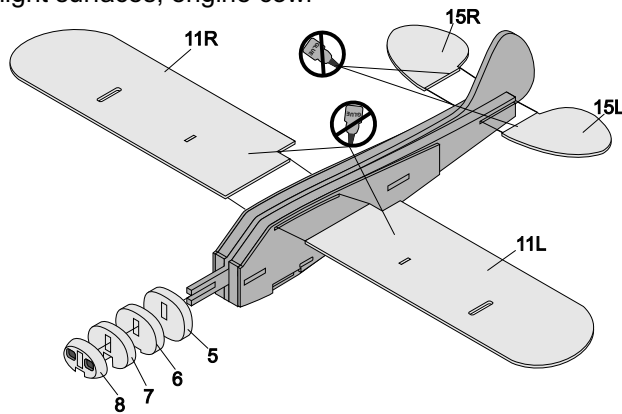
Hobby Knife, Scissors, White Glue, 220 grit sandpaper

Step 1 Fuselage



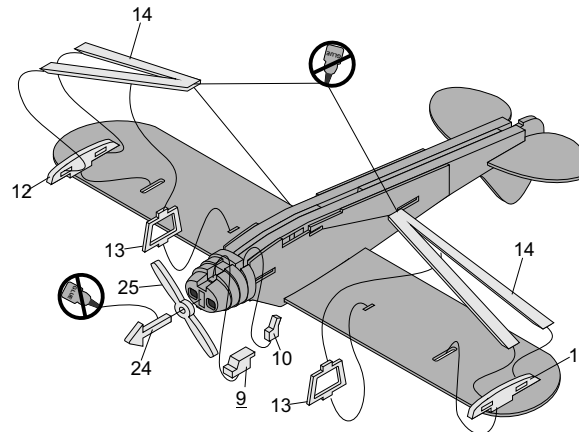
Step 2

Flight surfaces, engine cowl

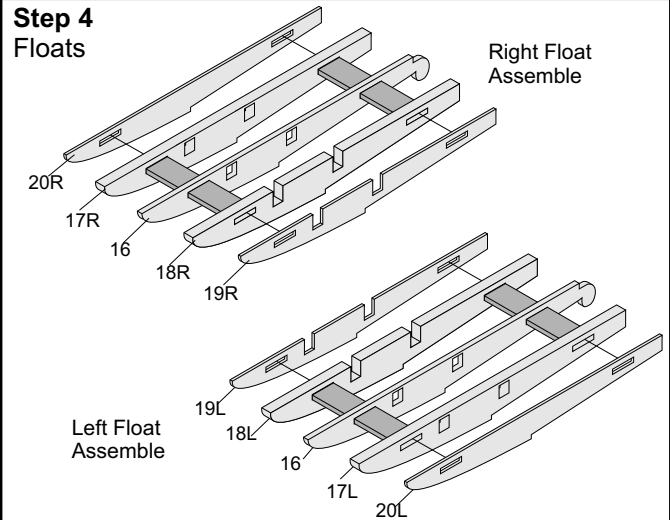


Step 3

Wing struts, propeller
air intake, exhaust.

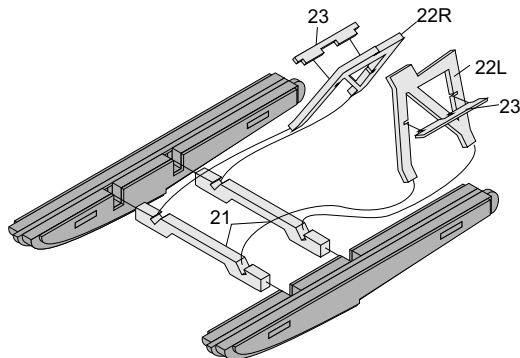


Step 4 Floats



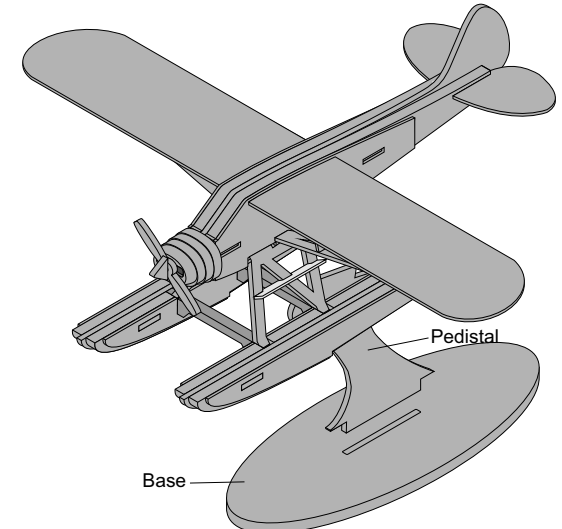
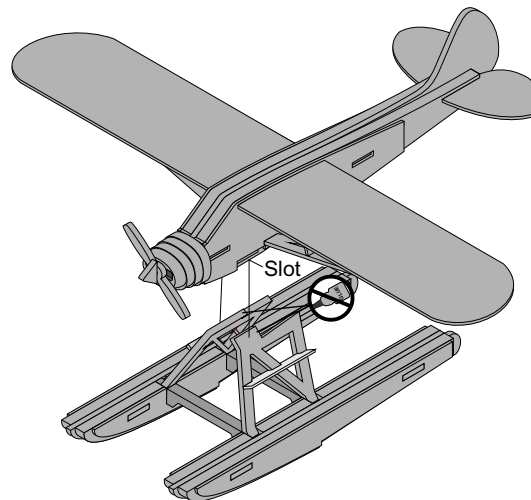
Step 4

Float struts and braces

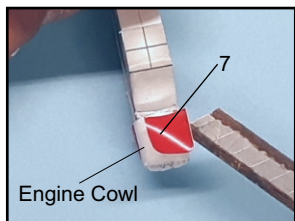


Step 5

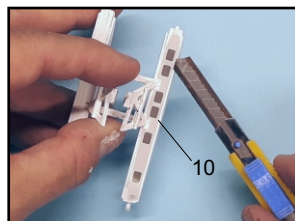
Final assembly



Completed model ready for paint and decals



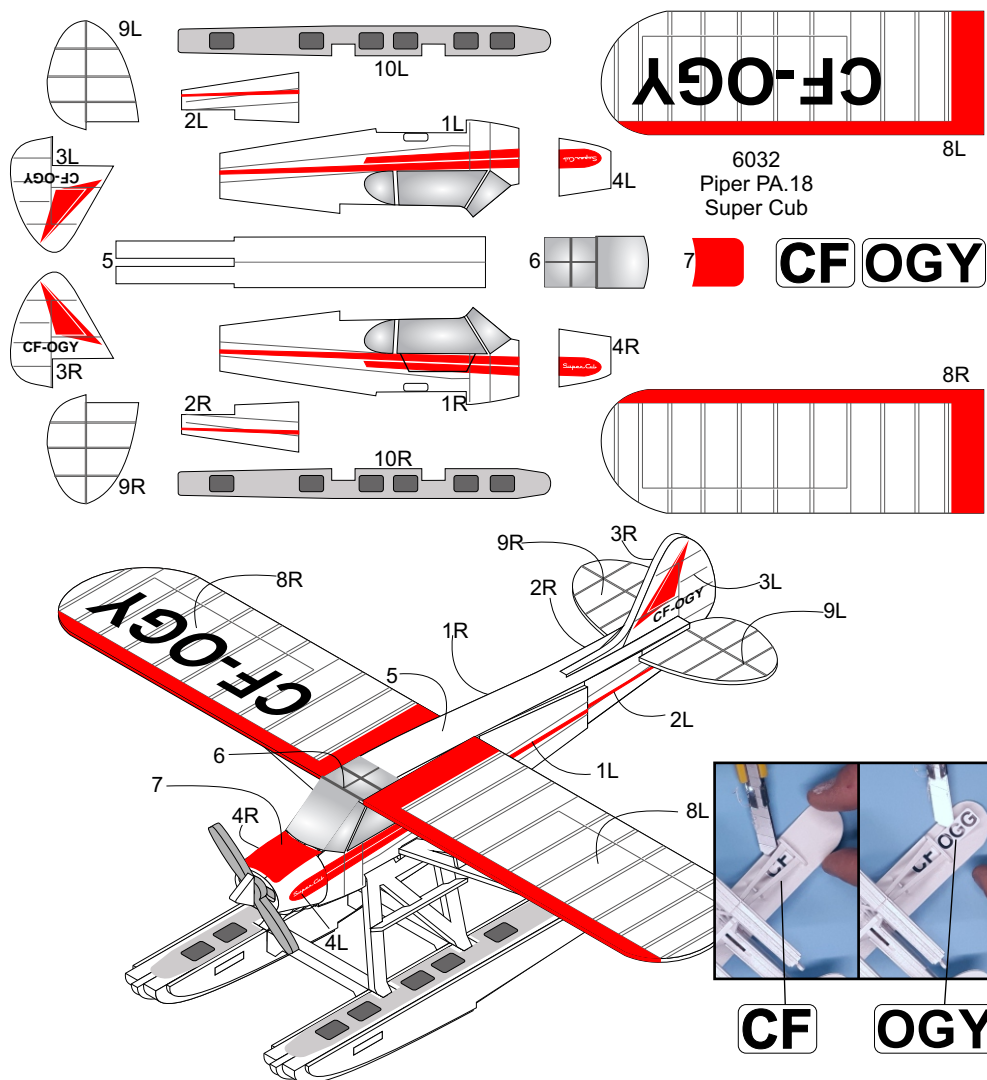
Place decal 7 onto the centre-top off engine cowl



Centre decal 10 onto the top of the float

Decals should be placed into position in numerical order. You will need to remove all wings, struts and landing gear to apply the side decal.

Take your time.



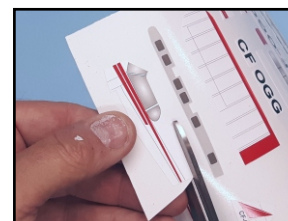
Applying decals

Tools needed to apply decals

Scissors, Utility knife

Make sure your hands are clean before applying decals. Avoid contact with the adhesive as this can cause the decal to loose some of its adhesion. Decals will adhere better to a smooth clean surface so we do recommend painting your model for best results.

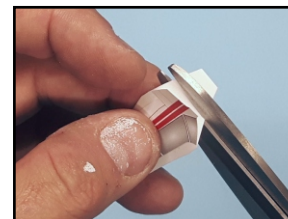
Note: Paint entire aircraft white before applying decals.



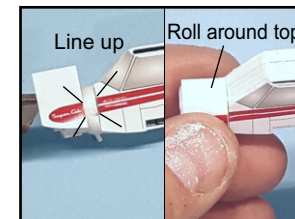
Cut out each decal as close to the edge as possible. Only cut out decals as needed.



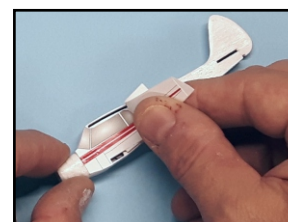
For small decals you may use a small utility knife to remove them from the backing and place in position.



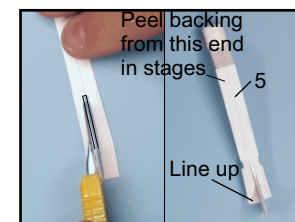
For the large decals, remove about a 1/4" of the backing and cut off with scissors.



Line up decal 4 to the stripe on decal 1 then roll around top of engine cowl



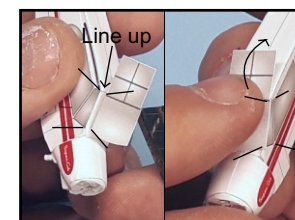
Place the exposed section on the surface making sure that your decal is properly aligned on the part.



Remove section of backing with knife. Line up decal 5 with rear of the fuselage. Make sure decal is centered.



Peel and cut backing off in stages making sure the decal is staying aligned on the surface.



Line up windshield to the side decals then roll over top of fuselage.

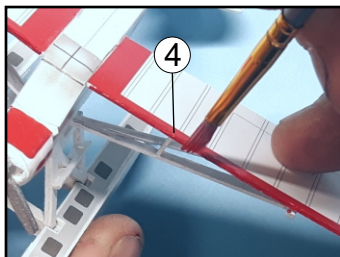
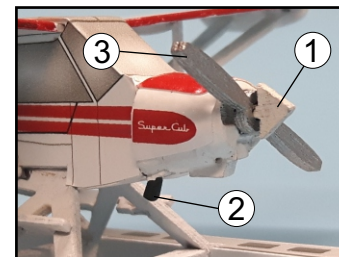
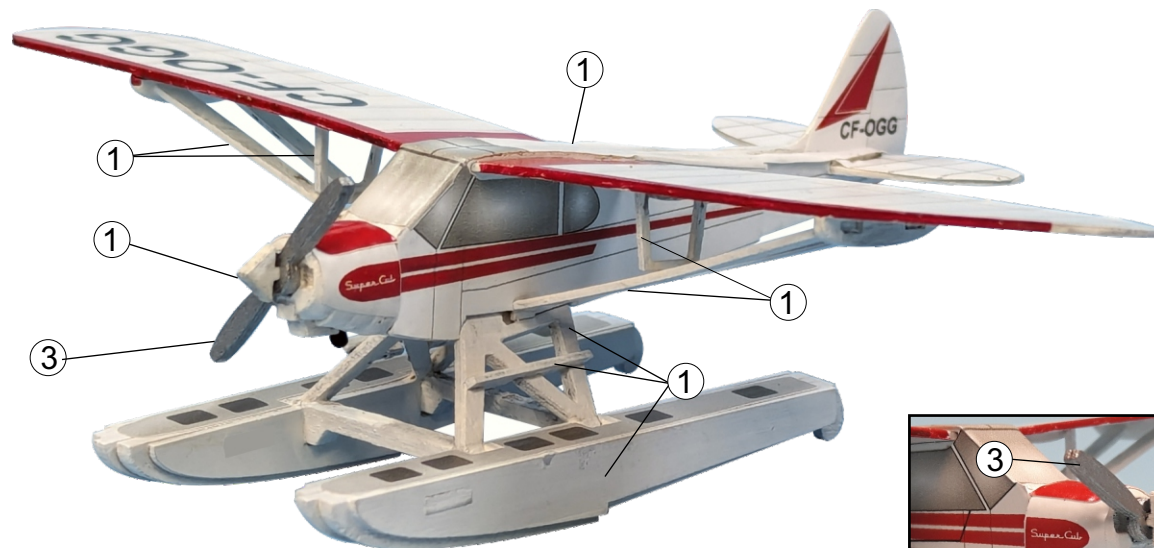
Piper PA-18 Super Cub

Suggested colours by Tamiya Model Paints

- 1 White X2**
 - Fuselage
 - Wings
 - Struts
 - Floats
 - Propeller nose cone
- 2 Black XF1**
 - Exhaust
- 3 Aluminum XF16**
 - Propeller
- 4 Red X7**
 - Leading edge

Note:

Paint entire aircraft **White** before applying decals.



Touch up leading edge of wing

